

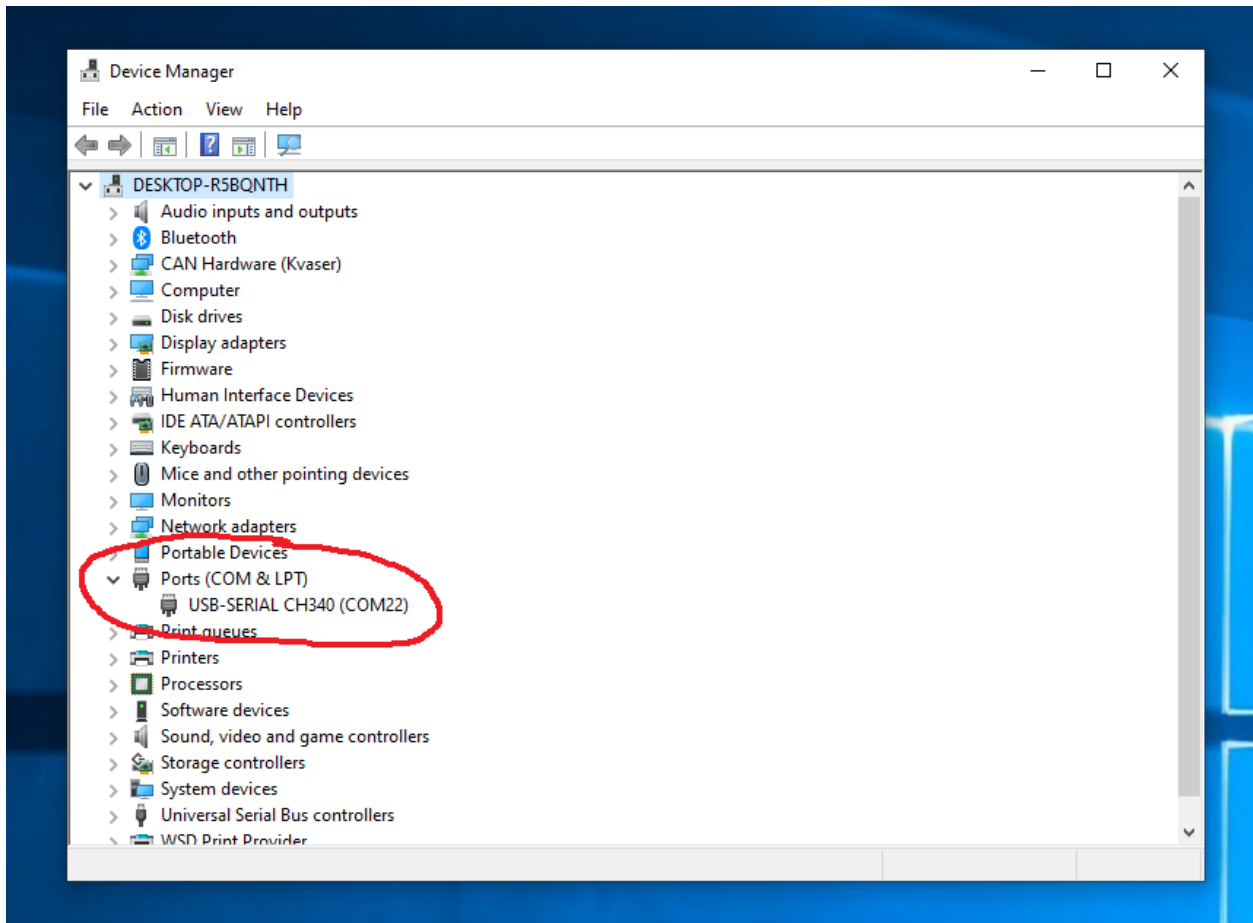
Remote Flash Tool Instructions

Step 1 - Adapter Drivers:

If using either the SeeedStudio USB CAN Analyzer or the Tactrix Openport install the appropriate below before proceeding.

- **USB CAN Analyzer Driver**
<https://mcuinnovations.com/media/CH341SER.EXE>
- **Tactrix OpenPort 2.0**
https://www.tactrix.com/downloads/openport2_setup_1024820.exe

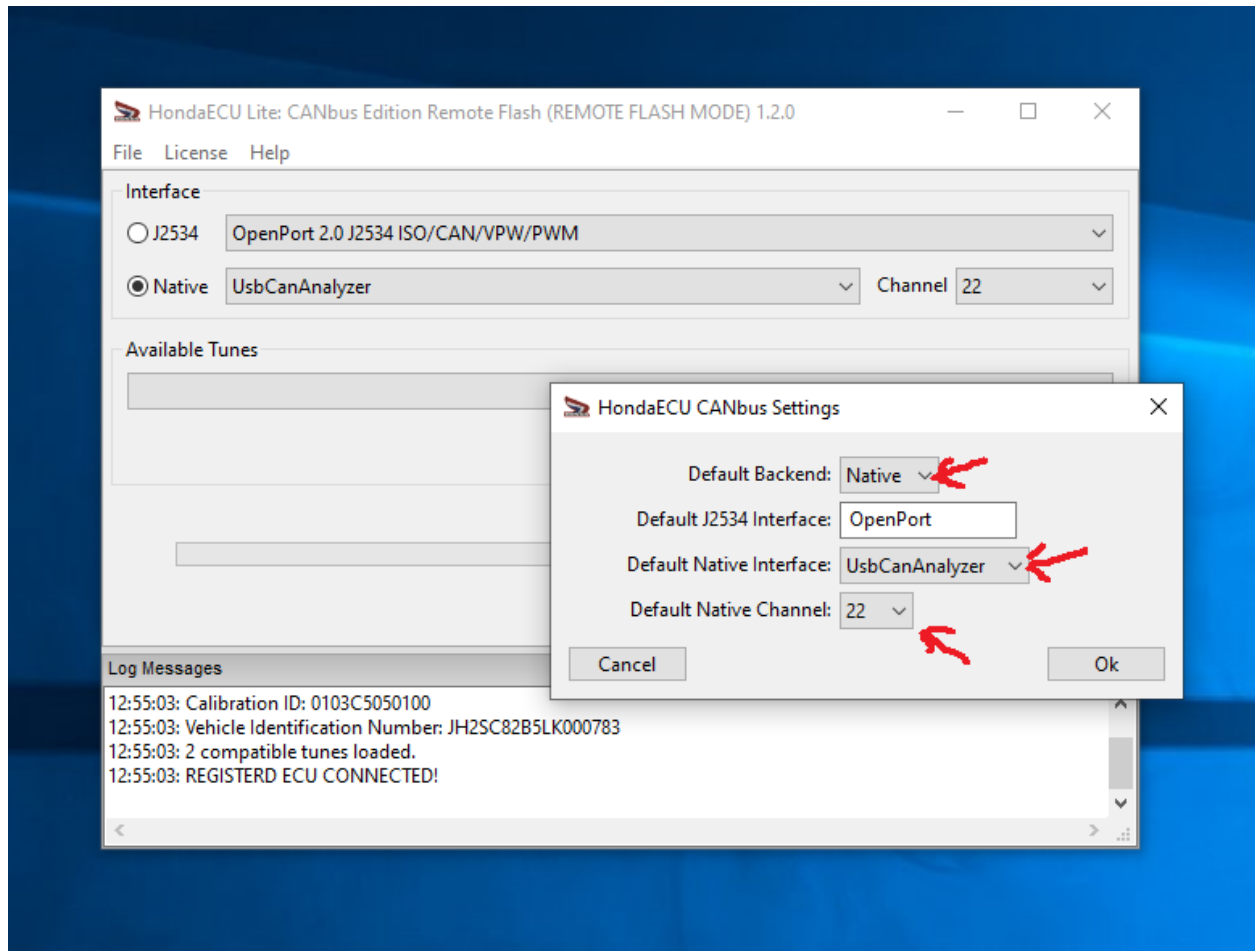
For those using the SeeedStudio USB Can Analyzer, after you install the driver, connect the adapter and check Device Manager in the Ports section and see if the CH340 device shows up properly. Take note of the COMM port number, we need this later.



Step 2 - Remote Flash Tool Installer

- https://mciuinnovations.com/software/ecuworkbench_remote_flash/

Next, install and launch the Remote Flash Tool. In the File menu go to Setting and then update the 3 settings marked with arrows in the picture below:



For the USB CAN Analyzer:

Change "default backend" to Native, change "default native interface" to UsbCanAnalyzer, and change the "default native channel" to the comm port number of the device that was shown in Device Manager. Click OK and then restart the app.

For the ValueCAN4:

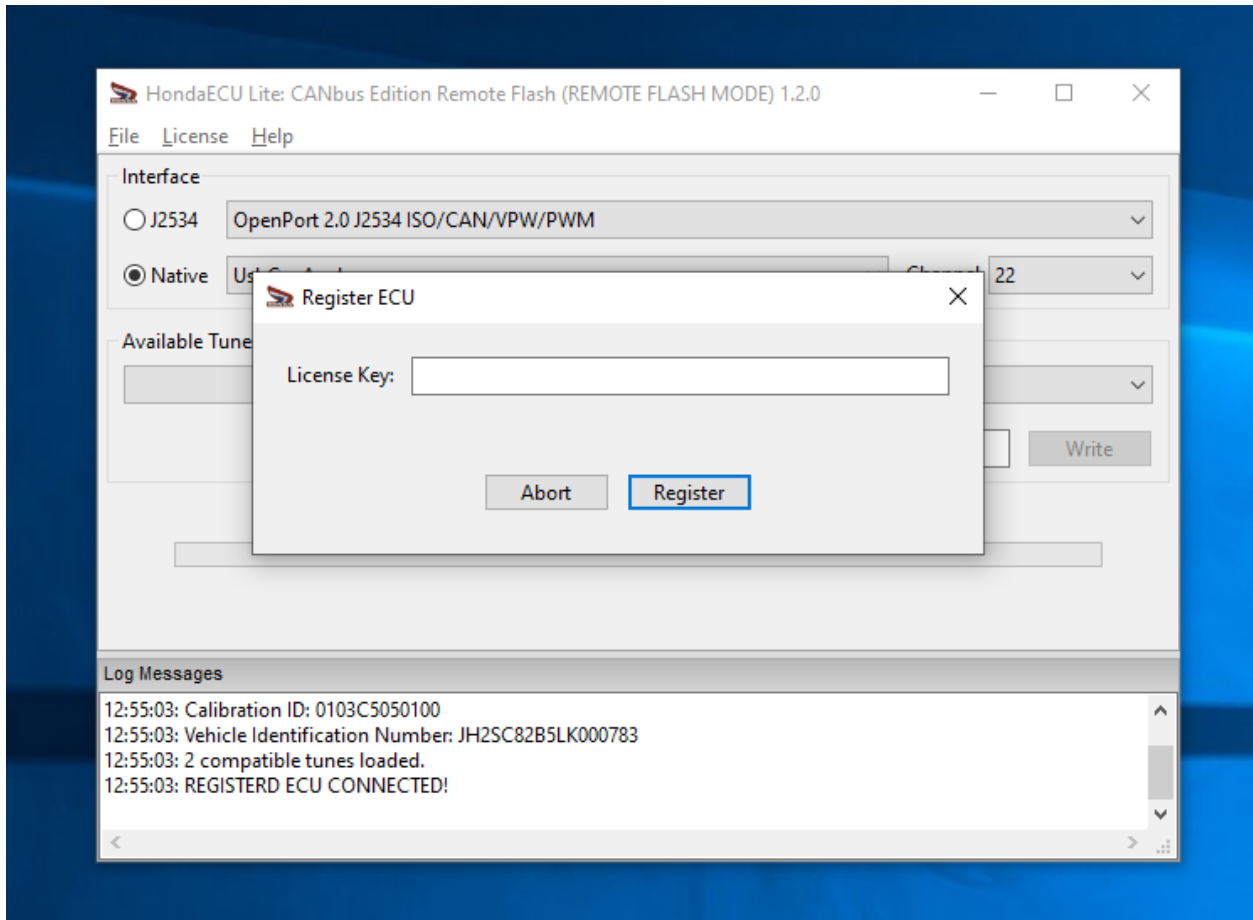
Change "default backend" to Native, change "default native interface" to NeoViBus, and change the "default native channel" to 1.

For the Kvaser Leaf:

Change "default backend" to Native, change "default native interface" to KvaserBus, and change the "default native channel" to 0.

Step 3 - ECU / License Registration

At this point you can connect the adapter to the bike and turn the bike on. You should see some info in the log showing the VIN number if the software is talking to the ECU correctly. At this time go to the Licenses menu and click on "Register ECU". Then where it says license key, paste the long activation key for that can be found on my website in the licenses section. After you click register you should see a message in the log.



Step 4 - Flash ECU

You should now be good to flash your ECU. Select the "stage 1" tune from the "available tunes" drop-down menu. Enter a valid 2FA token in the box and then click write.

